

CardAccess



Mini Remote Installation Guide

Put **MORE** Automation in Home Automation.™

Supported Models and Requirements

This documentation applies to the following Card Access products:

IMR10A	Card Access Mini Remote - EmberNet (Requires Control4® Release 1.7.0 or greater)
IMR10A-ZP	Card Access Mini Remote - ZigBee PRO™ (Requires Control4 Release 1.8.0 or greater)

Important Safety Instructions



IMPORTANT! Using this product in any manner other than outlined in this document voids your warranty. Also, Card Access is NOT responsible or otherwise liable in any way for any damage resulting from the misuse of this product. See the section of this document entitled WARRANTY for details.

Features

The Card Access Mini Remote provides homeowners with an easy-to-carry, simple-to-use remote for their Control4 system. Small, battery-powered and water-resistant, the Mini Remote fits on a keychain, clips to a car's sun visor, sits on a coffee table or nightstand, or easily goes inside a pocket or purse. The Mini Remote has five programmable buttons—the equivalent of a portable five-button LED keypad—that can be customized to perform almost any Control4® project task.

The Mini Remote extends remote control with a simple, pocket-sized form making it ideal as a portable, custom button for performing common functions.

Homeowners can use the Mini Remote in these common ways:

- Home Entry Control (open gates, garages, electronic door locks, turn on external/internal lights, arm/disarm alarm systems)
- House "Awake"/"Asleep" Button (all on/off control)
- Simple Audio Zone Control (with on/off, next song, next genre, volume up, volume down controls)
- Simplified TV/Audio Remote (with on/off, channel up, channel down, volume up, volume down controls)
- Lighting Scene Control
- Outdoor Living Control (operate lights, audio zones, pools, spas, water features)
- Personal "Panic Button" (to create "call-for-help" events and/or send e-mail help requests to family members)

Since the Mini Remote is completely programmable and customizable, its uses are limited only by your imagination.

What Is Included

You will find the following items inside the Mini Remote package:

- One (1) Card Access Mini Remote
- Two (2) AAA Alkaline Batteries
- One (1) Visor clip
- One (1) Lanyard
- Installation Guide
- Owner's Manual



Specifications

Model Number(s):	IMR10A, IMR10A-ZP
Unit Dimensions:	2.7 in (Length) x 1.3 in (Width) x .77 in (Thickness) (68.5 mm x 33 mm x 19.5 mm)
Unit Weight:	1.6 ounces (45 grams) with batteries
Power Source:	Two (2) AAA non-rechargeable alkaline or lithium batteries
Battery Life:	One (1) year under normal operation
Regulatory:	CE-EN55022:1994 Class B (CISPR) EN50082-1:1992 CE-EN55025 FCC Part 15 Class B CE
Environmental:	Water resistant. The product CANNOT be immersed.
Operational Temperature:	-0°F to 120°F (-20°C to +70°C)
Humidity:	10% to 90% Non-Condensing
Control4 Version Support:	IMR10A - Version 1.7 or later. IMR10A-ZP - Version 1.8 or later.
Wireless Specifications:	IEEE 802.15.4 ZigBee® Mesh Networking

Installation

1 Download and Install the Mini Remote DriverWorks™ Driver

A link to download the driver can be found at: www.cardaccess-inc.com/automation/drivers. Once you have downloaded the driver, copy the .c4i file into the "My Documents\Control4\drivers" folder on the PC that you will be using to configure the project in Composer.

2 Add Driver to Project

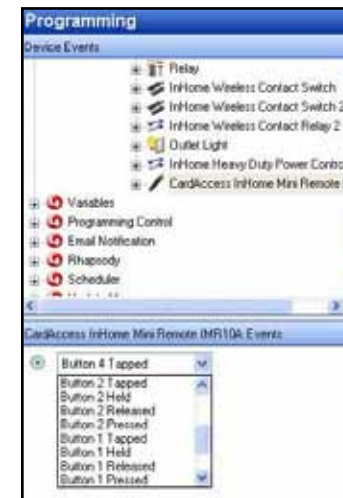
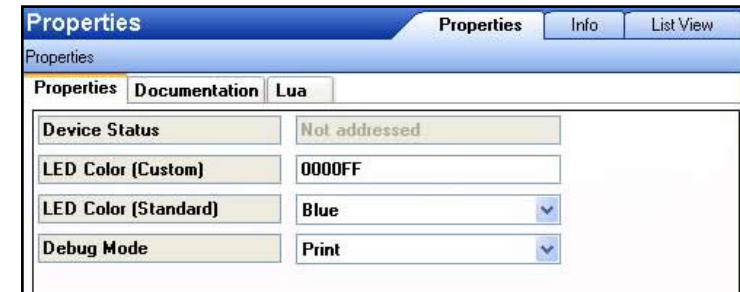
After the driver has been installed, start or restart Composer.

Select the Mini Remote from the list of available devices under "Device Type: > -- others --" and "Manufacturer: > Card Access."



3 Configure Device Settings

Under the Properties tab, select the LED color you prefer (default color is blue). You have the option to customize the color using the LED Triplet field, or by choosing from a predefined list of colors in the dropdown menu.



Under the Programming tab, configure the specific actions you would like the remote to perform based on given events, including Button Press, Release, Tap, and Hold for each of the buttons on the Mini Remote.



Button Press Event: Command is sent on initial press of the button.

Button Release Event: Command is sent when button is released.

Button Tap Event: Command is sent when button is released *only* if the button is held for less than .5 seconds.

Button Hold Event: Command is sent after the button has been held down for more than .5 seconds.

The Tap and Hold Events allow two functions to be performed by a single button. (Example: Toggle light with the Tap Event, and ramp dimmer on the Hold Event).

4 Install Batteries

1. Remove the end cap by gently pulling outward.
2. Remove the screw.
3. Open the case.
4. Insert the batteries. Polarities (+ and -) are marked on the center divider.



5 Hold Switch

The Hold Switch is located on the bottom of the Mini Remote. To turn on "hold," slide the switch to the right, and button presses will be ignored. To release the "hold" function, slide the switch to the left.



6 Identification

To identify the remote in Composer, press Button 5 (bottom button) four (4) times. The MAC address will be displayed. *A press rate of approximately two button presses per second is recommended.*

7 Button Legend Label

There is an indentation on the back of the Mini Remote for placing the button label legend. The size is approximately 0.5 inches wide by 1.5 inches long.

We recommend using the Brother P-Touch label printers and clear P-Touch Tape, part number TZ-135.

Troubleshooting

To remove the Mini Remote from a ZigBee PRO network and restore factory settings:

1. Press Button 1 (top left) while installing batteries. The LED will initially be green.
2. Continue pressing the button until the LED turns from green to blue.
3. Once the LED has turned blue, release Button 1 and press Button 4 (bottom right) within three (3) seconds.
4. The LED will turn solid red while the defaults are loaded.
5. The LED will turn solid green for approximately four (4) seconds and then blink green for approximately seven (7) while the remote reboots.
6. The Remote is now restored to factory configuration.

To determine which ZigBee channel the Mini Remote is using (EmberNet only):

1. Press Button 4 (lower right) five (5) times.
2. Press Button 3 (lower left) two (2) times.
3. The LED will blink to indicate the ZigBee channel used by the Remote (e.g., 5 blinks=channel 5).

If the Mini Remote is not working properly:

Restart the Mini Remote by removing and then re-inserting the batteries
Note: The batteries must be removed for 10 seconds to ensure a proper reboot.

For detailed ZigBee PRO-specific information:

Please see the latest *ZigBee PRO Upgrade and Installation Guidelines* document, available for download at <http://www.cardaccess-inc.com/automation/support>.

Card Access Product Support:

For help on the installation or operation of this product, email or call Card Access Product Support. Please provide your exact model number and the MAC ID/Serial Number for the device. You may contact Product Support by phone (801-748-4900), by e-mail (dealersupport@cardaccess-inc.com) or on the Internet at <http://www.cardaccess-inc.com/automation/support>.

Regulatory Compliance

The Card Access Mini Remote complies with standards established by the following regulatory bodies: Federal Communications Commission (FCC), Industry Canada (IC), Conformité Européene (CE), and Restriction of Hazardous Substances (RoHS).

FCC

FCC ID: MHIIMR10A

This device complies with Part 15 of the FCC Rules. Operation is subject to the following two conditions: (1) this device may not cause harmful interference, and (2) this device must accept any interference received, including interference that may cause undesired operation.

This equipment has been tested and found to comply with the limits for a Class B digital device, pursuant to Part 15 of the FCC Rules. These limits are designed to provide reasonable protection against harmful interference in a residential installation. This equipment generates, uses, and can radiate radio frequency energy and, if not installed and used in accordance with the instructions, may cause harmful interference to radio communications. However, there is no guarantee that interference will not occur in a particular installation. If this equipment does cause harmful interference to radio or television reception, which can be determined by turning the equipment off and on, the user is encouraged to try to correct the interference by one or more of the following measures:

- Reorient or relocate the receiving antenna.
- Increase the separation between the equipment and receiver.
- Connect the equipment into an outlet on a circuit different from that to which the receiver is connected.
- Consult the dealer or an experienced radio/TV technician for help.



IMPORTANT! Changes or modifications not expressly approved by Card Access, Inc. void the user's authority to operate the equipment.

Industry Canada

IC ID: 3681C-IMR10

This Class B digital apparatus complies with Canada ICES-003.

Cet appareil numérique de la classe B est conforme à la norme NMB-003 du Canada.

CE

We, Card Access, Inc. of 11778 South Election Road, Suite 260, Salt Lake City, Utah, 84020 USA, declare under our sole responsibility that the Card Access Mini Remote, Model Numbers IMR10A and IMR10A-ZP, to which this declaration relates, are in conformity with the following standards and / or other normative documents:

EN 55022/ICES-003, EN 55082, EN 55024:1998

We hereby declare that the above named product is in conformity with the essential requirements and other relevant provisions of Directive 1999/5/EC.

The conformity assessment procedure referred to in Article 10(3) and detailed in Annex II of Directive 1999/5/EC has been followed.

Restriction of Hazardous Substances (RoHS)

All parts in the Card Access Mini Remote meet the material restrictions of RoHS, as proposed by the RoHS Technical Adaptation Committee. This is based upon information provided by suppliers of the raw materials used by Card Access, Inc. to manufacture these products. As such, Card Access, Inc. makes no independent representations or warranties, expressed or implied, and assumes no liability in connection with the use of this information.

Product Registration

Please visit www.cardaccess-inc.com/inhome/registration to register your new product. Along with your contact information, you must provide the following additional information:

- Product Name (Card Access Mini Remote)
- Model Number (IMR10A or IMR10A-ZP)
- Date of Purchase
- Place of Purchase
- Serial Number (this is the "MAC ID" located on the sticker attached to the inside of the back cover)

Please refer to the One-Year Limited Warranty for complete warranty information.

One-Year Limited Warranty

This product is warranted to be free of defects in material and workmanship for one year from date of original purchase from Card Access, Inc. ("Card Access").

Card Access will, at its election and as the purchaser's or end user's sole and exclusive remedy for any breach of the limited warranty set forth above, repair or replace this product if a defect in material or workmanship is identified and communicated to Card Access within the one-year period described above. Card Access is not responsible for removal or reinstallation costs. This warranty is not valid in cases where damage to this product is the result or arises out of misuse, abuse, incorrect repair or improper wiring or installation.

To notify Card Access of any breach of the foregoing limited warranty and to obtain warranty service, contact Card Access Customer Support by e-mail to support@cardaccess-inc.com or by calling 801-748-4900, extension 15, to obtain a Return Materials Authorization ("RMA") number and instructions for returning your defective product to Card Access.

IMPLIED WARRANTIES, INCLUDING THOSE OF MERCHANTABILITY AND FITNESS FOR A PARTICULAR PURPOSE, ARE EXPRESSLY DISCLAIMED, EXCEPT WHERE SUCH DISCLAIMER IS PROHIBITED BY APPLICABLE LAW. CARD ACCESS AND/OR THE SELLER DISCLAIM(S) ANY AND ALL LIABILITY FOR SPECIAL, INCIDENTAL AND CONSEQUENTIAL DAMAGE IN ANY WAY ASSOCIATED WITH OR RELATED TO THE PURCHASE, INSTALLATION AND/OR USE OF THIS PRODUCT.

Some states/provinces do not allow limitations on how long an implied warranty lasts, or the exclusion or limitation of special, incidental or consequential damages, so these limitations and exclusions may not apply to you. This warranty gives you specific legal rights. You may also have other rights which vary from state/province to state/province.

This is Card Access' exclusive written warranty.

About This Document

Copyright © 2010, Card Access, Inc. All rights reserved.
Card Access, Wires Not Included, and Do More. Control More. are trademarks of Card Access, Inc.

ZigBee and ZigBee PRO are marks of the ZigBee Alliance.
Control4 and DriverWorks are marks of Control4 Inc.
Other marks may be the property of their respective owners.

